

Plastic Pallets

Nestable, Rackable, Stackable

Stratis[®]
www.pallets.com



USDA, FDA and HACCP Approved

global *Stratis*faction

Stratis Plastic Pallets are:

Durable

10+ years expected life, one piece solid wall molded.

Cost Effective

Payback can be seen in a matter of weeks. No nails or splinters. Reduced spoilage and product damage.

Clean and Sanitary

Eliminates wood particles, moisture, odors and chemicals from transferring onto your products.

Ergonomical

Easy to use and lightweight. Simpler for operators to handle. Reduced risk of injury to employees.

Safety

Internationally patented Deck-Lok™ safety stacking system allows pallets to be moved empty without fear of sliding.

Great Look

Impressive for plant tours and customers. Shows commitment to cleanliness, safety, quality and productivity.

Environmentally Friendly

Molded in PE/plastic recyclable material.



Experience Satisfaction with the most durable and feature rich pallets on earth

Table of Contents

Pallets by Size 4-8



Roll Pallets 10-11



Stratis Fork Sleeves 9



Containers 14



Shuttle Pallets 9



Pallet Boards 12



Racking & Corner Boards . . . 13



Drum Pallets 13



Export Pallets 8



Visit Us @
www.pallets.com

1.800.PALLETS (725-5387) [USA and Canada]

All other Inquiries Phone +1.317.328.8000

Pallets by size

These pallets are well suited for all industries including printing, automotive, folding carton, corrugated, die cutting, newspapers, food, web press, metal stamping, pharmaceutical, converting and distribution. If you don't see a pallet that fits your requirements, please contact us regarding a custom designed plastic pallet to fit your needs.

Key Features:

- Stretch wrap-able with "Stretch Wrap Retention Wings" on many styles
- Optional molded in Logo Nameplates available on some models
- UV sunlight protection for outdoor storage
- HACCP internationally approved
- USDA/FDA approved
- Conveyorable on most systems



Pallet Styles:



Double Sided

Slotted Top



Three Runner

Smooth Top

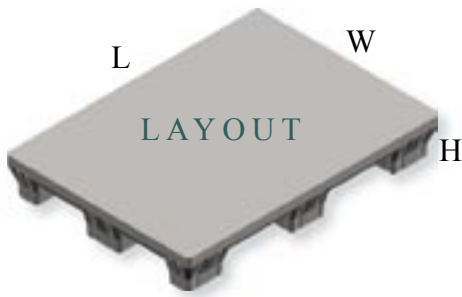


Nestable

Part Number

L" x W" x H"

L x W x H cm



P2921RS29-N

29.4" x 21" x 6.3"

74.7 x 53.3 x 16 cm



P2921RS29-NS

29.4" x 21" x 6.3"

74.7 x 53.5 x 16 cm



P3022RS00

29.5" x 21.5" x 6.3"

75 x 54.6 x 16 cm



P3022S00

29.7" x 22" x 5.5"

75.4 x 56 x 14 cm



P79RS00-A

31.3" x 24.3" x 6.7"

79.4 x 61.6 x 17 cm



P3124RS00

31.3" x 24.5" x 6.3"

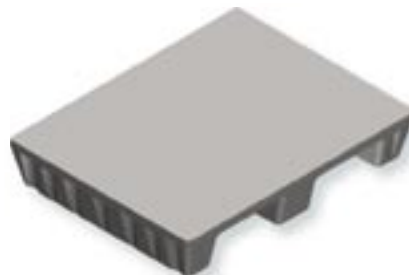
79.5 x 62.3 x 16 cm



P3124S00

31.3" x 24.5" x 5.5"

79.5 x 62.3 x 14 cm



P3523S00

35.5" x 23.5" x 6"

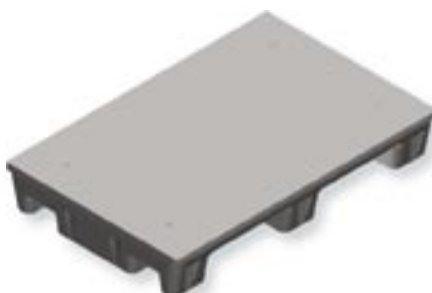
90.2 x 59.7 x 15.2 cm



P4026S00

40.5" x 26.5" x 6"

102.9 x 67.3 x 15.2 cm



P4029RS00

40.5" x 28.8" x 7"

103 x 73.2 x 17.8 cm



P4029RS00-A

40.5" x 28.8" x 7"

103 x 73.2 x 17.8 cm



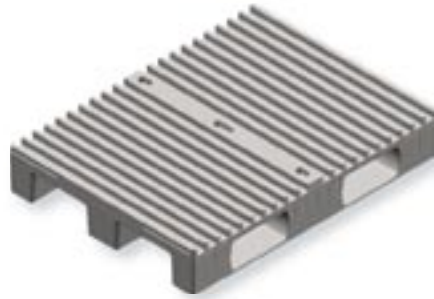
P4029S00-CAP

41" x 29" x 1.8"
104.1 x 73.7 x 4.6 cm



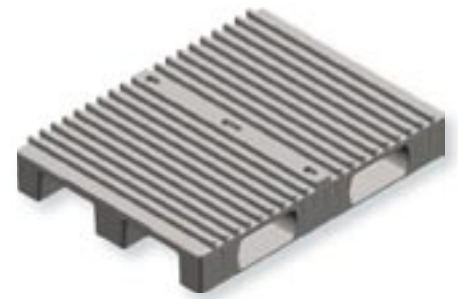
P108RS108-A

42.3" x 31.7" x 6.9"
107.5 x 80.5 x 17.5 cm



P108RS108-A2

42.3" x 31.7" x 6.9"
107.5 x 80.5 x 17.5 cm



P4131RS41-N

41.5" x 31" x 7"
105.4 x 78.7 x 17.8 cm



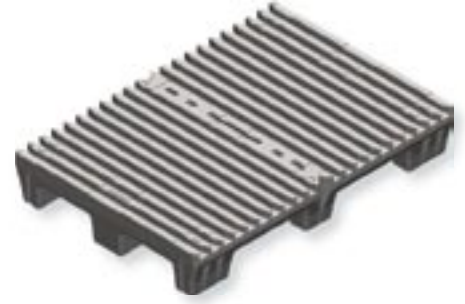
P4131RS41-NS

41.5" x 31" x 7"
105.4 x 78.7 x 17.8 cm



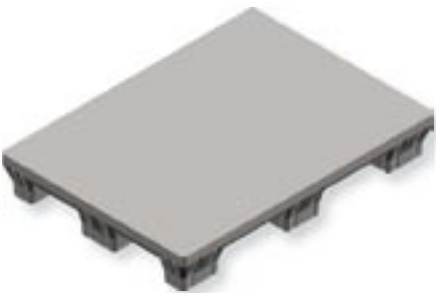
P4230RS00

42.3" x 29.5" x 6.8"
107.5 x 75 x 17.3 cm



P4231S00

42" x 30.5" x 6"
106.7 x 77.5 x 15.2 cm



P4433RS00

44.9" x 33.5" x 6.9"
114 x 85.1 x 17.5 cm



P4444S00

44" x 44" x 6"
111.8 x 111.8 x 15.2 cm



P4533RS00

45" x 33" x 7.3"
114.3 x 83.8 x 18.5 cm



P4840DS00

48" x 40" x 5.5"
121.9 x 101.6 x 14 cm



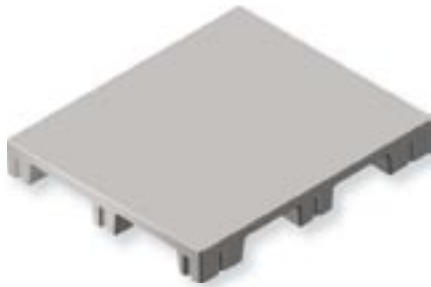
P4840SLW-B

48" x 40" x 6"
121.9 x 101.6 x 15.2 cm



P4840S00

48" x 40" x 6"
121.9 x 101.6 x 15.2 cm



P4840NST

48" x 40" x 6"
121.9 x 101.6 x 15.2 cm



P4840S00-SSSW

48" x 40" x 6"
121.9 x 101.6 x 15.2 cm



P4840S00-3R

48" x 40" x 6.2"
121.9 x 101.6 x 15.7 cm



P4840LS00-3R

48.5" x 40.5" x 6.8"
123.2 x 102.9 x 17.3 cm



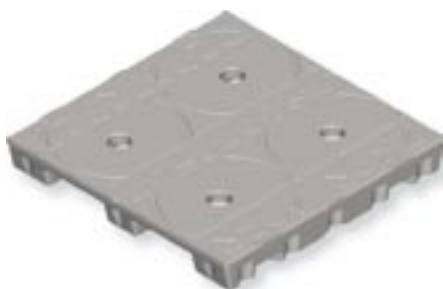
P4848DS00

48" x 48" x 5.5"
121.9 x 121.9 x 14 cm



P4848S00-3RB

48.5" x 48.5" x 6"
123.2 x 123.2 x 15.2 cm



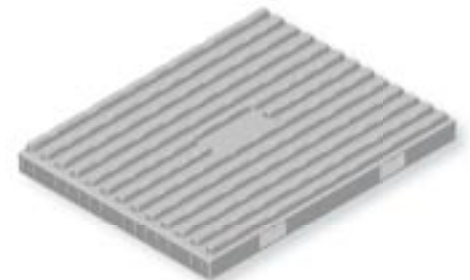
P5038RS00

49.8" x 37.6" x 7"
126.5 x 95.5 x 17.8 cm



P5166RS00

51" x 66" x 6.3"
129.5 x 167.6 x 16 cm



P5539RS00

55" x 39.3" x 7"
139.7 x 99.8 x 17.8 cm



P5539RS00-A

55" x 39.3" x 7"
139.7 x 99.8 x 17.8 cm



P5539S00

55.3" x 39.3" x 6"
140.5 x 99.8 x 15.2 cm

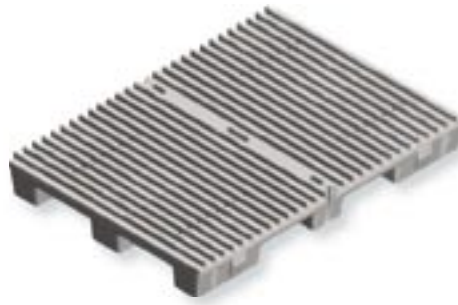


P5539RS00-ACER

55" x 39.3" x 7"
139.7 x 99.8 x 17.8 cm


P143RS143-Ab

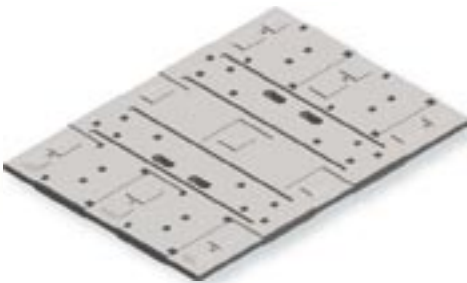
56.3" x 40.6" x 6.8"
143 x 103 x 17.8 cm


P5640RS28

56.3" x 40.2" x 6.8"
143 x 102 x 17.2 cm


P5640S00-CAP

56.7" x 40.6" x 1.8"
144 x 103 x 4.6 cm


P6043RS00

60.8" x 43.5" x 7"
154.4 x 110.5 x 17.8 cm


P6048DS00-M

60" x 48" x 5.5"
152.4 x 121.9 x 14 cm


P6343RS63

63.5" x 42.8" x 7"
161.3 x 108.7 x 17.8 cm


P164RS164-Ab

64.6" x 47.2" x 6.9"
164 x 120 x 17.5 cm


P7248DS00-WF

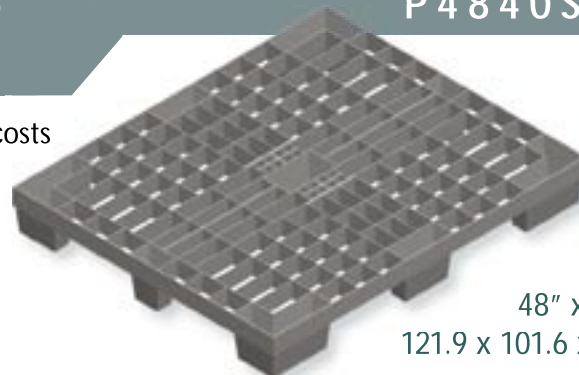
72" x 48" x 5.5"
182.9 x 121.9 x 14 cm



EXPORT PALLET

P4840SLW-B

- Super lightweight reduces worker injury and shipping costs
- Designed for One-Way Shipping
- Nestable 31 pallets in a 94" (240 cm) stack
- 4-Way fork entry
- Capacities: 6,000 lbs static load, 2,000 lbs. dynamic



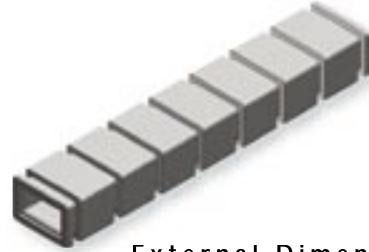
48" x 40" x 6"
121.9 x 101.6 x 15.2 cm

Stratis Sleeves

Replaces slip-sheets and pallets for WIP and closed loop shipping of unitized loads that are self supporting and simply need separation in stacking and protection from bare forks in handling. Stratis Sleeves fit over forklift forks to provide protection for your product when moved or stacked.

Key Features:

- Durable (10+ years life)
- One piece solid-wall molded construction
- Eliminate product damage cause by bare forks
- Effective in all process areas



External Dimensions

Opening

Model	Length	Width	Height	Width	Height
FS120	47.2" (120 cm)	8.7" (22 cm)	5.9" (15 cm)	6.5" (16.5 cm)	3.7" (9.5 cm)
FS150	59" (150 cm)	10" (25.5 cm)	5.9" (15 cm)	6.9" (17.5 cm)	3.5" (9 cm)
FS152	59.8" (152 cm)	8.7" (22 cm)	5.9" (15 cm)	6.75" (17.1 cm)	3.8" (9.5 cm)
FS175	68.9" (175 cm)	8.7" (22 cm)	5.9" (15 cm)	6.5" (16.5 cm)	3.7" (9.5 cm)
FS200	78.7" (200 cm)	8.7" (22 cm)	5.9" (15 cm)	6.5" (16.5 cm)	3.7" (9.5 cm)
FS225	88.6" (225 cm)	8.7" (22 cm)	5.9" (15 cm)	6.5" (16.5 cm)	3.7" (9.5 cm)
FS240	94.5" (240 cm)	8.7" (22 cm)	5.9" (15 cm)	6.75" (17.1 cm)	3.8" (9.5 cm)
FS250	98.4" (250 cm)	8.7" (22 cm)	5.9" (15 cm)	6.75" (17.1 cm)	3.8" (9.5 cm)
FS275	108.3" (275 cm)	8.7" (22 cm)	5.9" (15 cm)	6.75" (17.1 cm)	3.8" (9.5 cm)



Shuttle Pallets

Designed as "load removal slot" pallets. This "take it or leave it" style of pallet is excellent for storage and delivery of unitized corrugated sheets and boxes and leave the pallets behind. Pick the load off the pallets or carry the pallets with the load. For use when you need to pick a load off a pallet with forks only without damaging the pallet or product.



Key Features:

- Durable with 10+ years life
- Two way load removal slots
- One piece solid-wall molded construction
- Nestable safety stacking features
- Effective in all process areas and closed loop shipping
- Eliminate wood particles from product areas
- Eliminate employee injuries due to nails and splinters
- Eliminate product damage caused by bare forks

P4834LRS00-B-SW

48" x 34" x 8"
121.9 x 86.4 x 20.3 cm



P6048LRS00-B-SW

60" x 48" x 8"
152.4 x 121.9 x 20.3 cm



Roll Pallets

Stratis' cradle style roll pallets are for the protection of rolls in work in process, storage and transport. For film, paper, metal or any material in a cylindrical shape. Carries loads up to 10,000 lbs. with internal molded steel reinforcement. Can handle rolls up to 62.5 inches in diameter. Contact us so we can recommend a roll pallet that works for you.



RP3048S00-B
 30"(L) x 48"(W) x 9"(H)
 76.2 x 121.92 x 22.86 cm



CALL TODAY ABOUT
 CUSTOM ROLL PALLETS



RP2736S00-B
 27.3" x 35.5" x 8.3"
 69.3 x 90.2 x 21 cm



RP2848S00-B40
 27.5" x 47.8" x 8.3"
 69.9 x 121.3 x 21 cm



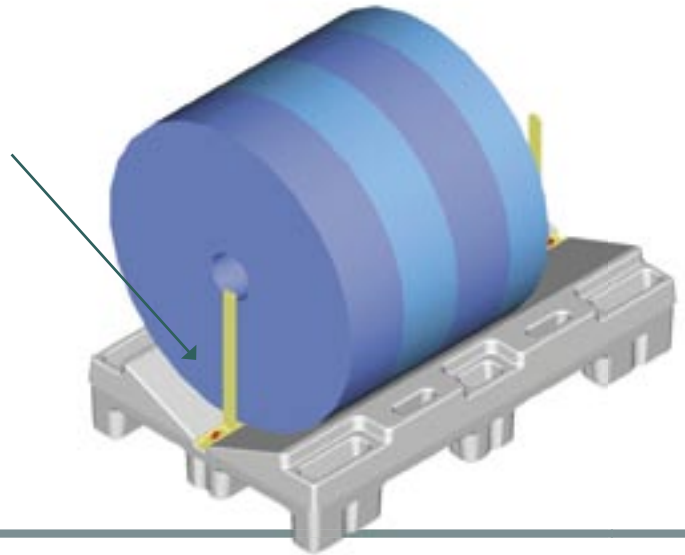
RP4248S00-B
 42" x 48" x 9.3"
 106.7 x 121.9 x 23.6 cm



Bookends For Rolls

Safety in Slit Roll Transportation

CALL TODAY FOR
DETAILS AND OPTIONS



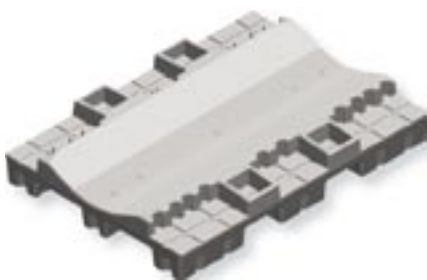
Key Features:

- Durable (10+ years life)
- Cradle style to hold various size rolls
- Rackable (Drive-in and Selective)
- Safety stacking features
- Effective in all process areas and closed loop shipping
- One piece solid-wall molded construction
- Nestable
- Clean for food and flexible packaging hygiene requirements



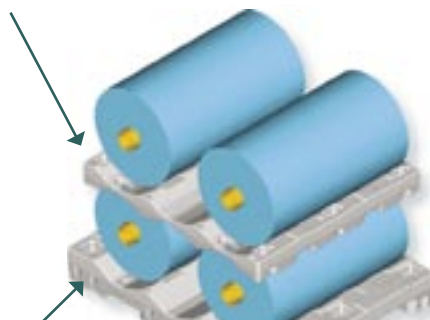
RP4462S00-B

44" x 62" x 9.75"
111.8 x 157.5 x 24.8 cm



RP4642SDIV-B

46" x 42.5" x 5"
116.8 x 108 x 12.7 cm



RP5442S-B

54" x 42.5" x 7.5"
137.2 x 108 x 19.1 cm

RP4842S00-B

48" x 42" x 8.8"
121.9 x 106.7 x 22.4 cm



Pallet Boards

Stratis pallet boards are like Stratis pallets except they have no legs. They are frequently used in conveyORIZED plants that move product and have automatic product loaders and unloaders. Users enjoy the same durability and strength typical of regular pallets including internal steel reinforcement options for unsupported flow rack storage areas. In some cases the pallet boards are used in conjunction with complementary Stratis pallets as caps or load protectors. The same patented Deck-Lok™ safety stacking system is generally incorporated into the board designs to enhance this type of use.

Key Features:

- Durable (10+ years life)
- Safety stacking features
- Effective in all process areas
- One piece solid-wall molded construction
- Eliminate wood particles from product areas
- Conveyorable
- Rackable

CALL TODAY ABOUT
CUSTOM PALLET BOARDS

P4029RS00BRD

40.5" x 28.8" x 2.5"
103 x 73.2 x 6.4 cm



P5539RS00BRD

55.0" x 39.3" x 2.5"
139.7 x 99.8 x 6.5 cm



P5539RS00BRD-A

55" x 39.3" x 2.5"
139.7 x 99.8 x 6.5 cm



P5539RS00BRD-ACER

55" x 39.3" x 2.5"
139.7 x 99.8 x 6.5 cm



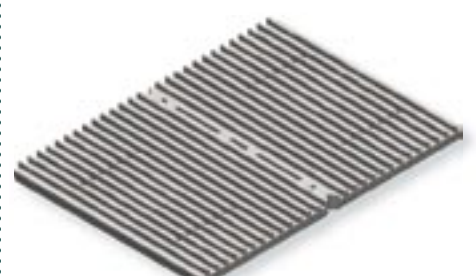
P5539S00BRD

55.3" x 39.3" x 1.5"
140.5 x 99.8 x 3.8 cm



P143RS00BRD-A

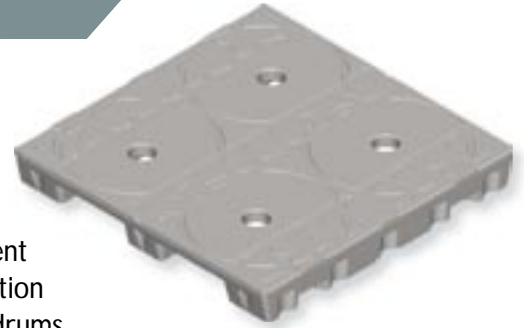
56.3" x 40.6" x 3"
143 x 103 x 7.6 cm



P4840LS128-DRUM-BSW

DRUM PALLETS

P4848S144-DRUM-BSW



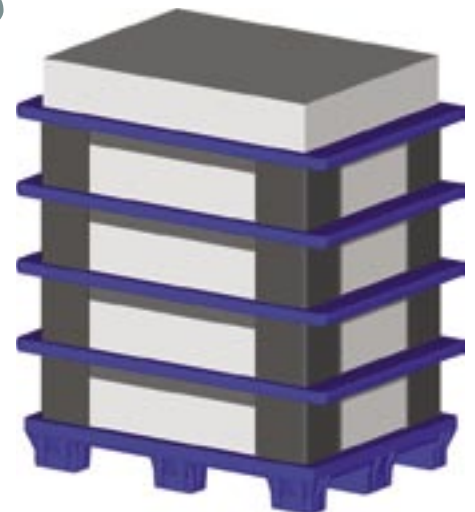
- Skid resistant top
- Safety stacking features
- Internal galvanized steel reinforcement
- One-piece solid wall molded construction
- For racking, stacking and transporting drums

48.5" x 40.5" x .68"
123.2 x 102.9 x 17.3 cm

48.5" x 48.5" x .6"
123.2 x 123.2 x 15.2 cm

Corner and Racking Boards

Carefully designed to meet the demanding need for racking and separating paper in the printing industry. Create a shelf arrangement with corner boards and racking boards. Replace plywood boards in storage systems.

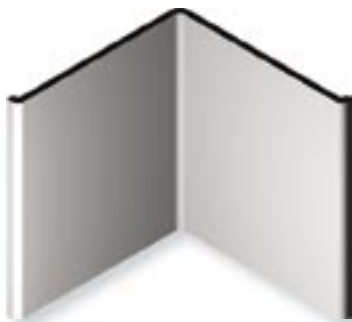


Key Features:

- Durable (10+ years life)
- Lightweight and easy to position
- Rigid for paper support
- easy to carry with underside Hand-holds
- Smooth surface will not splinter

Corner Boards

4" to 12"
10.2 to 30.5 cm



Racking Board

RB4332S42-HD-8B
42.9" x 32" x .79"
109 x 81.4 x 2 cm



Racking Board

RB4530S00-B
45" x 30.3" x 1.6"
114.3 x 77 x 4.1 cm



Stratis Pak®

Stratis' plastic pallet container is known as the Stratis Pak. It consists of three parts: a plastic pallet, a plastic corrugated sidewall and a plastic cap. It can carry weights of a metric ton (2200 lbs), and with Stratis' proprietary reinforcement technology, plastic containers can be stacked three high for static load capability of three metric tons (6600 lbs). The Stratis Pak is ideal for high security heavy distribution and storage. When empty, it breaks down into a "clam shell" profile with a break-down density of 3 to 1. Stratis can custom make a Stratis Pak to fit your requirements.



Collapsible



Key Features:

- Durable (10+ years life)
- Rackable (Drive-in and Selective)
- Safety stacking features
- Effective in all process areas and closed loop shipping

CALL TODAY REGARDING CUSTOM
SIZE STRATIS PAKS DESIGNED
TO FIT YOUR NEEDS

32.2" [81.7 cm]
(inside)

26.6" [67.6 cm]
(inside)

SP90106-SWB

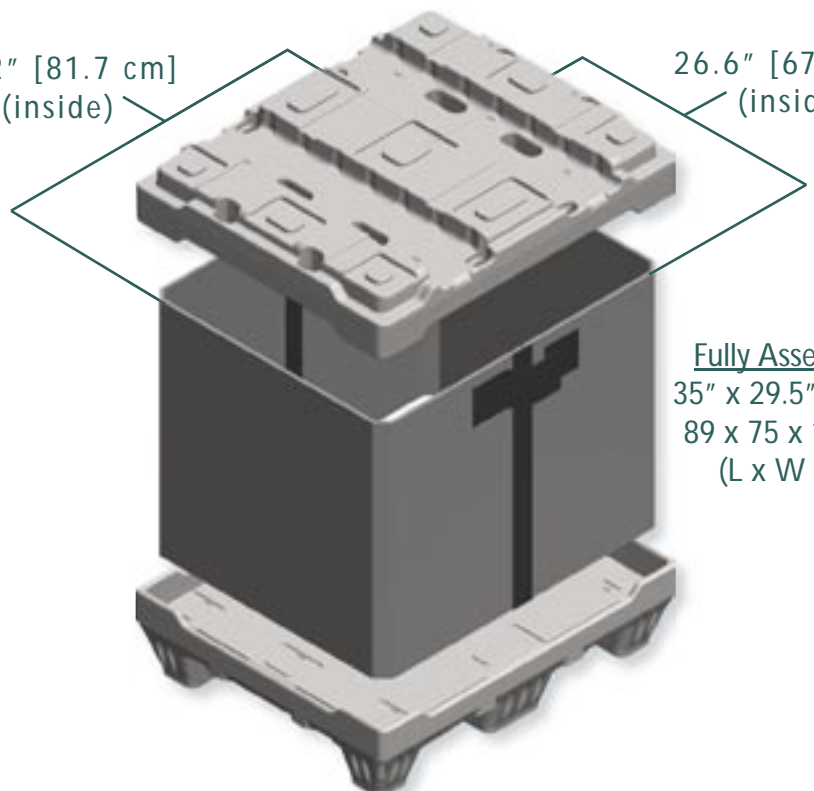
Specifications:

SP90PAL-SWB (pallet)
35" x 29.5" [89 x 75 cm]

SP90CAP-SWB (cap)
35" x 29.5" [89 x 75 cm]

SP90106S2SDW (sidewall ID)
32.2" x 26.6" [81.7 x 67.6 cm]

Fully Assembled
35" x 29.5" x 41.7"
89 x 75 x 106 cm
(L x W x H)



What you need to know:

STEEL REINFORCEMENT OR NOT?

Even Stratis plastic pallets are not as rigid as an oak board. But, when galvanized steel reinforcement is invisibly molded into the deck, the rigidity exceeds that of wood. Examine your handling procedures to decide if the load is always adequately supported by either the floor, conveyors, or other handling equipment. Also, consider whether a small amount of "give" in the pallet is a concern. Steel reinforcement in Stratis pallets, ordered in the appropriate direction, eliminates deflection. In some cases it serves to redistribute the effect of "point loading" too. Consult a Stratis representative.

CONVEYOR SYSTEMS

All Stratis pallets can be conveyed on automatic systems and used in palletizers. The conveyor or palletizer must be compatible with the pallet. For example, long-runner pallets flow well on roller conveyors one way but may not when turned 90 degrees, depending on the roller centers and the width of the runners. Most Stratis pallets were designed to flow on standard conveyors.

PALLET RACK SYSTEMS

Stratis pallets (with internal steel reinforcement) can be successfully used in "drive-in" or "edge rack" systems. The steel reinforcement in the pallets needs to span the distance between the edges of the rack. Stratis pallets can also be used in conventional/selective rack systems that have two supporting crossbars. These racks might require Stratis pallets to have steel reinforcement in the direction perpendicular to the rack's crossbars.

TEMPERATURE

Stratis solid-wall molded pallets withstand temperatures in freezer environments to minus 40° F (-40°C).

LOAD CAPACITY

All Stratis pallets with the exception of the 'export pallet' have a static load capacity exceeding 10,000 lbs. with even load distribution, and some are in the 20,000 + lbs. range. The key to "moving load" capacity depends on load distribution and handling devices, not total weight. Point loading must also be considered. Internal Steel reinforcement allows 3000 + lbs. loads in unsupported racks.

To determine a pallet's applicability within your system, we recommend that you purchase a test Stratis pallet to check it out in your environment.

Why make the change to Stratis pallets?

Stratis Pallets are replacing wood and other plastic pallets at an ever increasing rate in manufacturing and distribution environments. More and more companies realize that lightweight, splinter-free, recyclable plastic pallets are cost effective. Stratis Plastic Pallets are generally a capital investment and require cost justification. Here is a payback analysis to let you compare wood with Stratis Plastic Pallets. To determine your Return on Investment, use 10+ years for the projected life of Stratis pallets. (The life-time of Stratis pallets will depend on the nature of your operation and the manner in which your materials handling system treats pallets.)

COST ANALYSIS

Monthly Purchase of non-Stratis pallets	\$ _____
Monthly repair cost of non-Stratis pallets	\$ _____
Monthly cost of damaged product due to broken non-Stratis pallets	\$ _____
Monthly cost of hours due to injuries resulting from non-Stratis pallets	\$ _____
Monthly cost of hours associated with purchasing, warehouse, receiving and freight transportation for expendable non-Stratis pallets	\$ _____
Total Monthly Cost of Expendable Non-Stratis Pallets	\$ _____
One Time Cost of Stratis Plastic Pallets	\$ _____

PAYBACK CALCULATION

(divide acquisition of Stratis Pallets by monthly cost of non-Stratis pallets) _____ months